



The Civil Protection System of the Autonomous Region of Friuli Venezia Giulia (Italy)

The response to hydro geological and alluvial risk

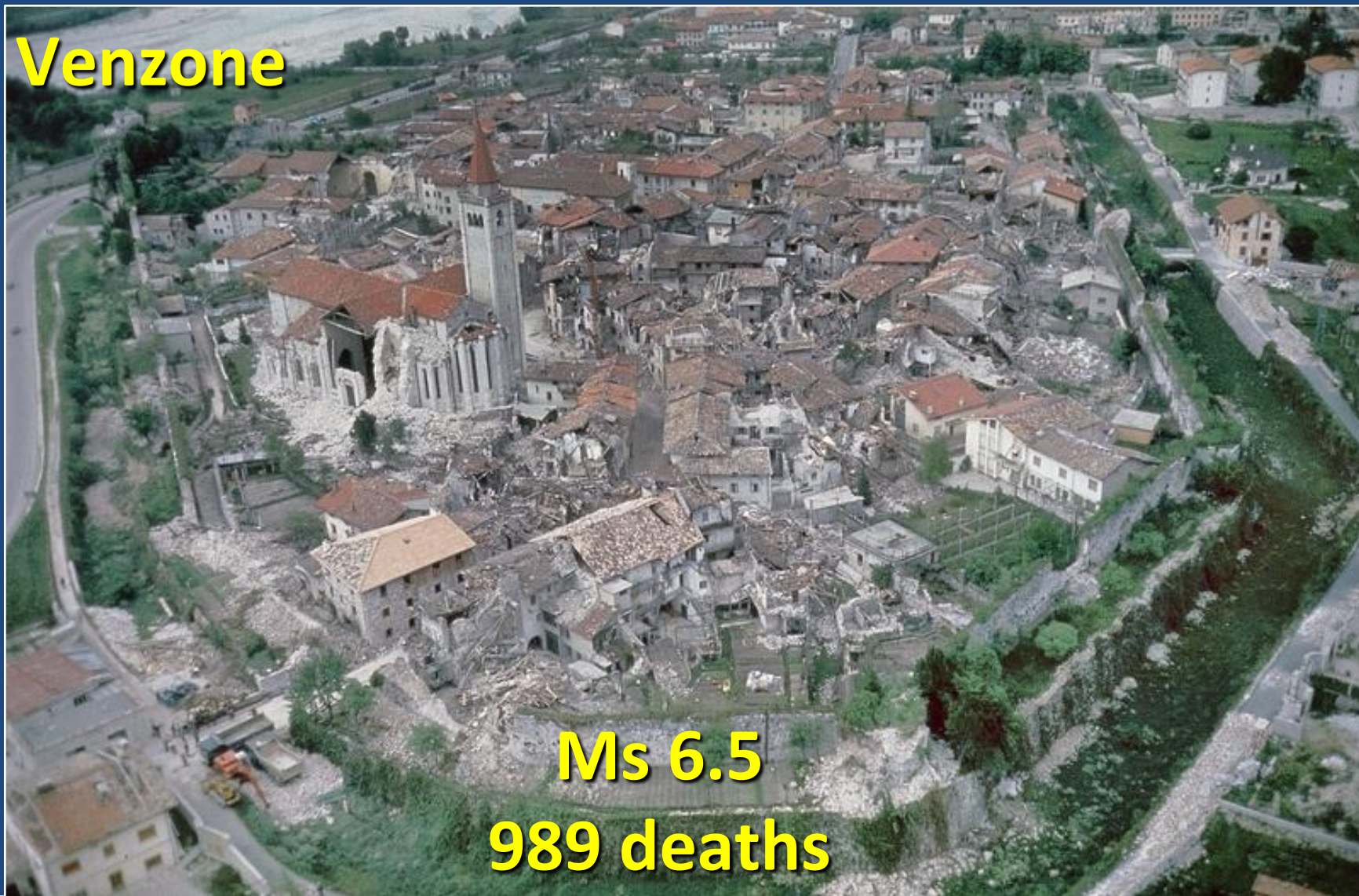
Geol. Raffaele Lotto
La Plata, November 2017

Friuli Venezia Giulia Autonomous Region



Largest recent event: 06/05/1976

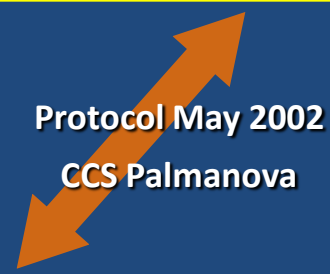
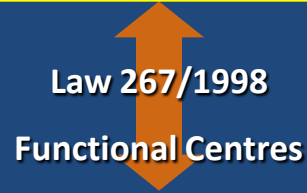
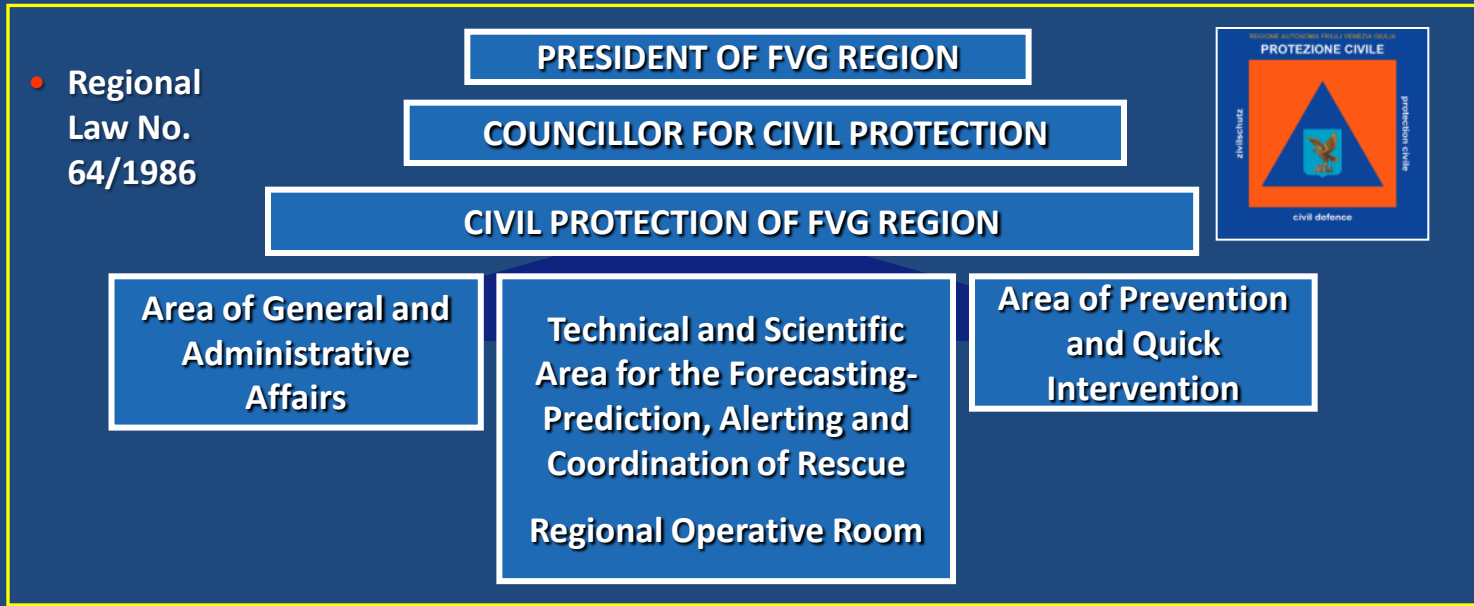
Venezia



Ms 6.5
989 deaths

Friuli Venezia Giulia Civil protection Organization

Civil protection of FVG – National Department of Civil Protection

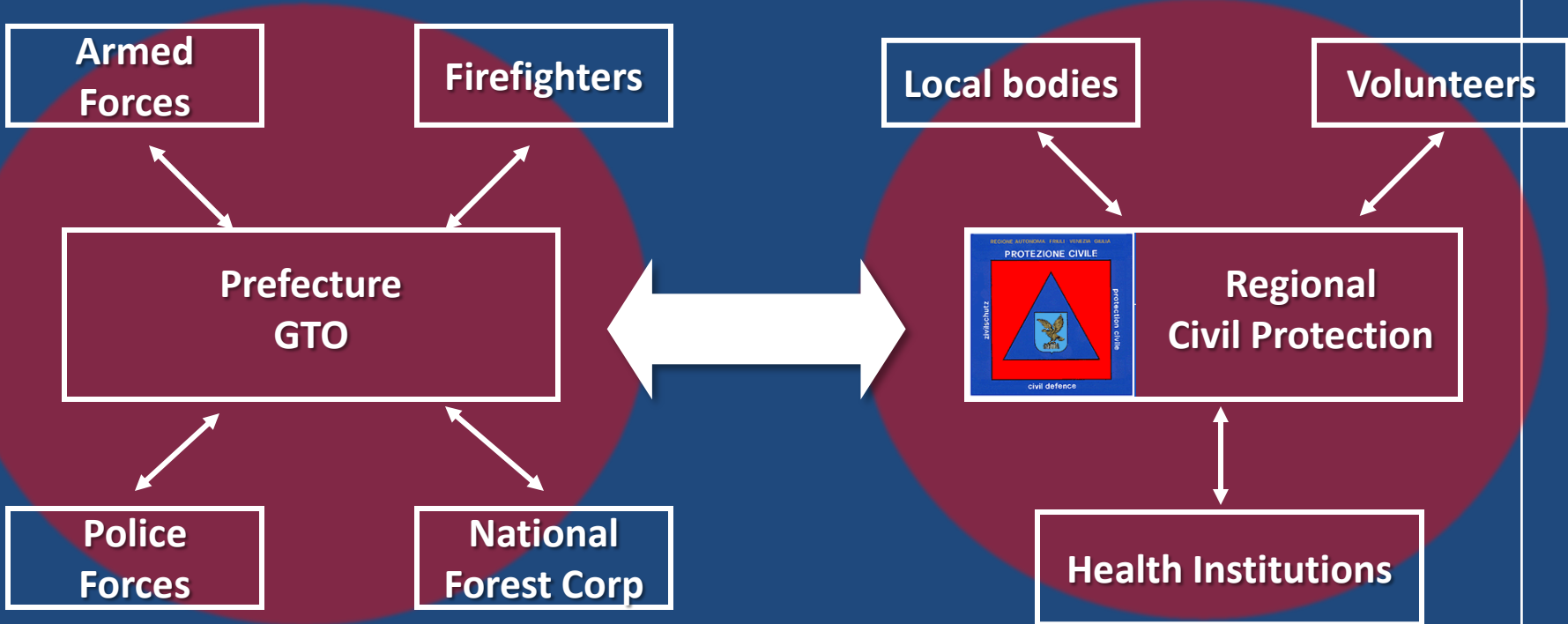


- Law 225/1992

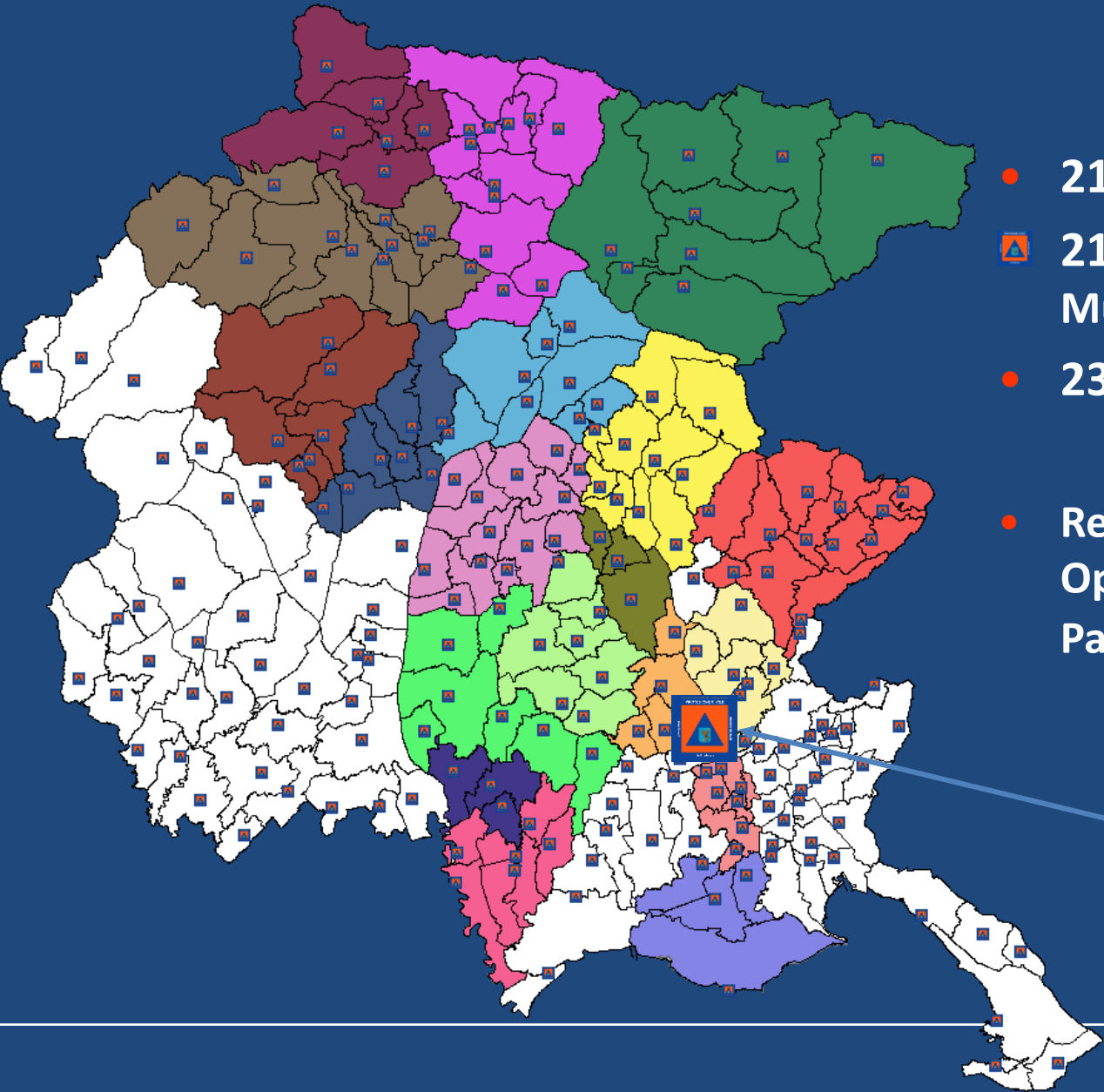
Integrated Regional System of Friuli Venezia Giulia Civil Protection

State forces

Regional forces



Organisation widespread on the regional territory



- 216 Municipalities
- 216 Civil protection Municipality Groups
- 23 Districts
- Regional Civil protection Operative Center in Palmanova: SOR/SOUP/CCS



Volunteers

- FVG Civil Protection Volunteers in the **Municipality Groups**:

- 216 technical and logistical teams
- 119 fire-fighting teams
- 1 water rescue team
 - **More than 8.000 volunteers**
- Equipments
 - **More than 650 operative vehicles**



- Civil Protection **Associations**:

- 80 associations
 - **More than 3.600 volunteers**



Natural Risks

- Seismic Risk
- Forest fire Risk
- Hydro Geological Risk:
 - landslides
 - floods
 - debris-flow
 - high-water, storm



31st October – 2nd November 2010 – Flood Basins of Livenza river – Sacile - Pordenone

811 mm in 72 hours
150 mm in 6 hours



Main tools for risk management and realisation of prevention actions

- **Regional Operative Room (SOR)** in Palmanova
- Territory real-time **control and monitoring** systems
- **Emergency planning**
- **Prevention, fast intervention** and **restoration** works
- Civil protection **personnel, volunteers** and **population training**

Regional Operative Room in Palmanova (SOR)

from 2017



Free phone number



UE emergency number

Territory real-time control and monitoring systems

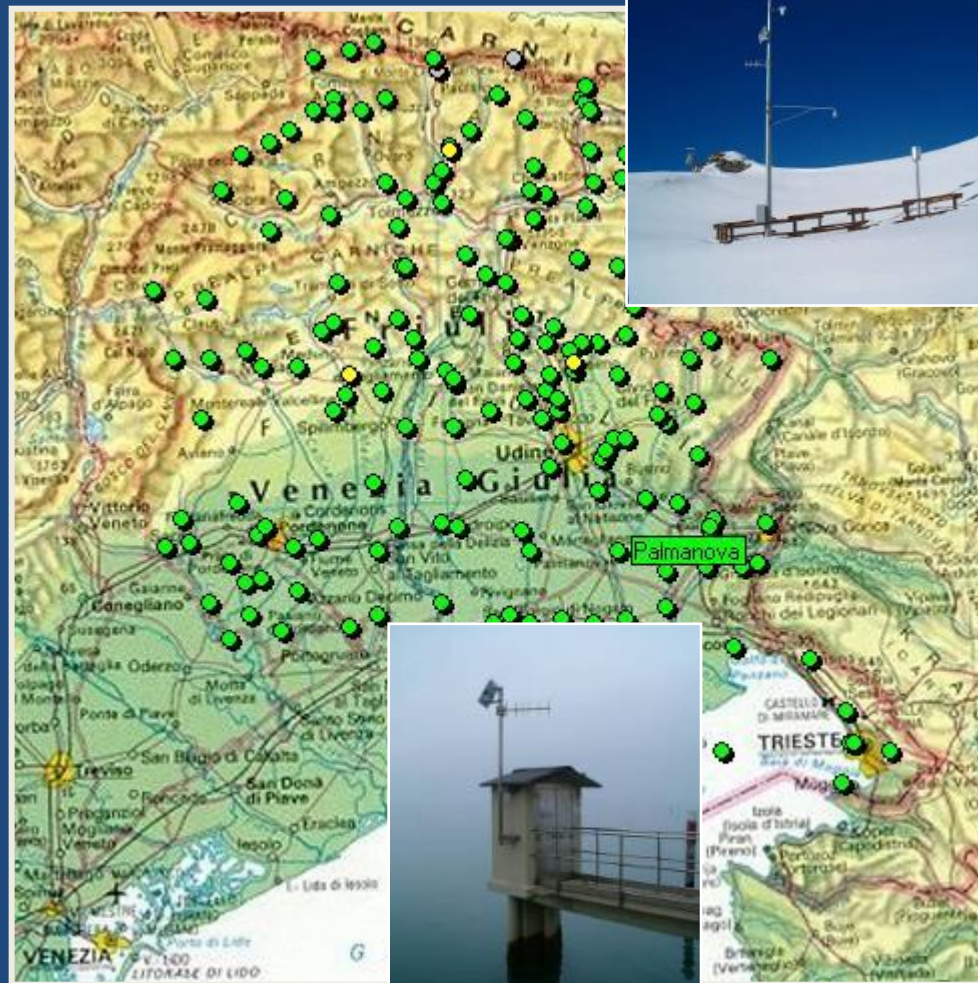
The data from all of the Civil Protection Monitoring Networks are collected in the Operative Centre in Palmanova :

- Hydro-Meteo-Marine monitoring network
- Hydro Geological monitoring network
- Meteorological Radars for nowcasting
- Satellite observations (Meteosat MSG)
- Seismic Monitoring Network

Hydro Meteo Marine monitoring network

Real time monitoring ground effects of meteorological events by automatic monitoring network managed by regional civil protection :

- 191 monitoring stations
- 111 hydrometers
- 112 rain gages
- 27 barometers
- 100 air thermometers
- 5 sea level sensors
- 18 snow level sensors
- 4 present weather sensors



Hydro Geological monitoring

Example of a real-time monitoring system (Passo Pramollo)

2003 - 2013

Tiltmeters 4 parameters



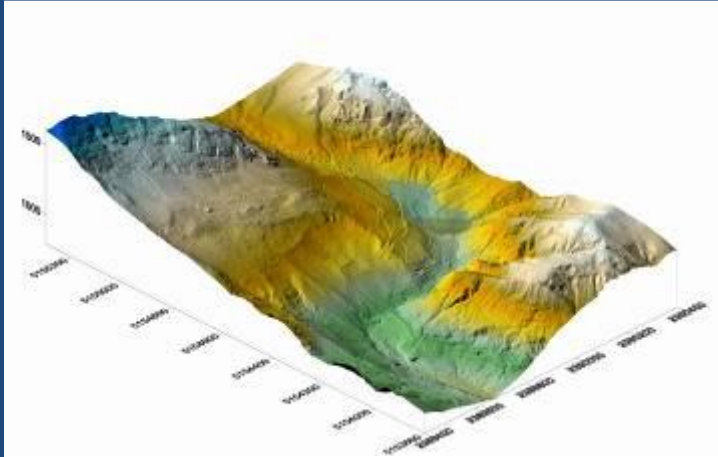
Surface cable
extensometers



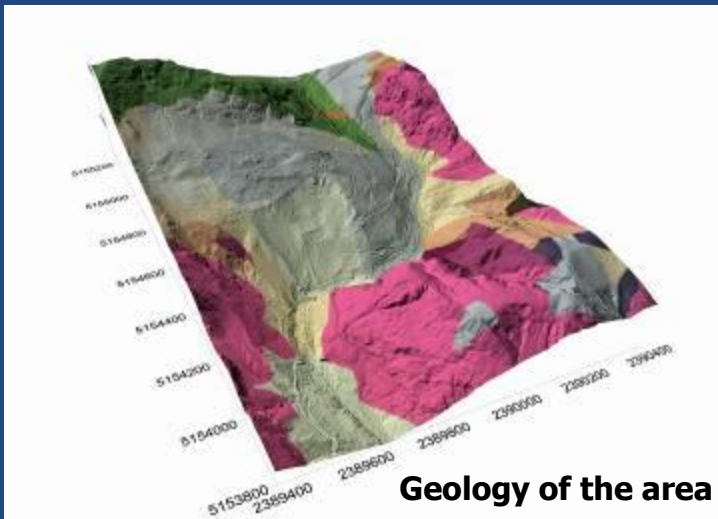
Depth extensometers



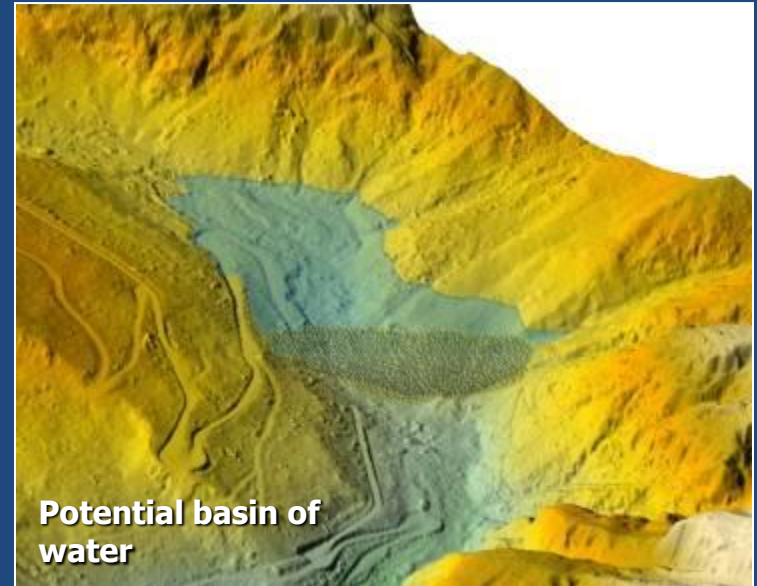
Example of monitoring system (Passo Pramollo) Laserscan relief by helicopter



Foot of the landslide



Geology of the area

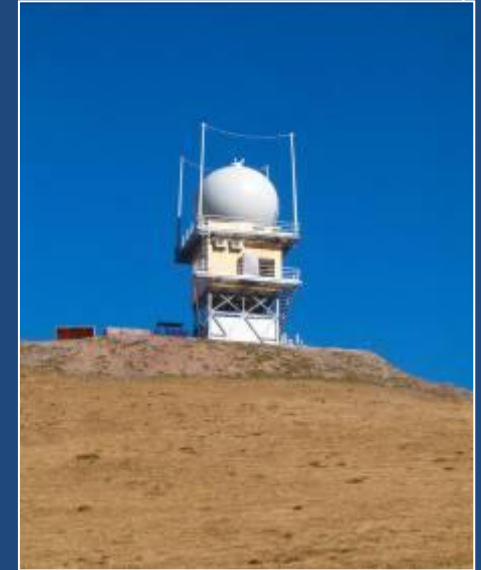
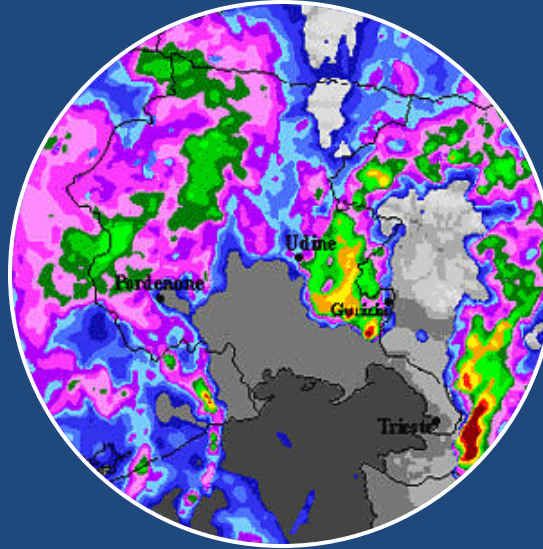


**Potential basin of
water**

Meteorological Radars for nowcasting



Fossalon Radar



Mount Zouf Plan Radar

- Meteorological radar data are used for civil protection purposes in order to detect and monitor critical events and, during the phase of meteorological nowcasting
- The meteorological radar of DPC installed on Mount Zouf Plan grants the maximum coverage of the mountain area of FVG and also of part of Carinzia region (Austria) and Slovenia

Emergency planning

Emergency plans web portal

REGIONE AUTONOMA
FRIULI VENEZIA GIULIA

Numero Verde Emergenze
800 500 300


PROTEZIONE CIVILE

Protezione Civile della Regione
Nucleo Operativo Piani d'Emergenza

Stai visitando il sito come: PCR Aree Emergenza Logout

Piano Regionale delle Emergenze di Protezione Civile

L.R 64/1986 - DGR 18/01/2008, n. 99



Ufficio Territoriale del
Governo

Struttura regionale di Protezione civile

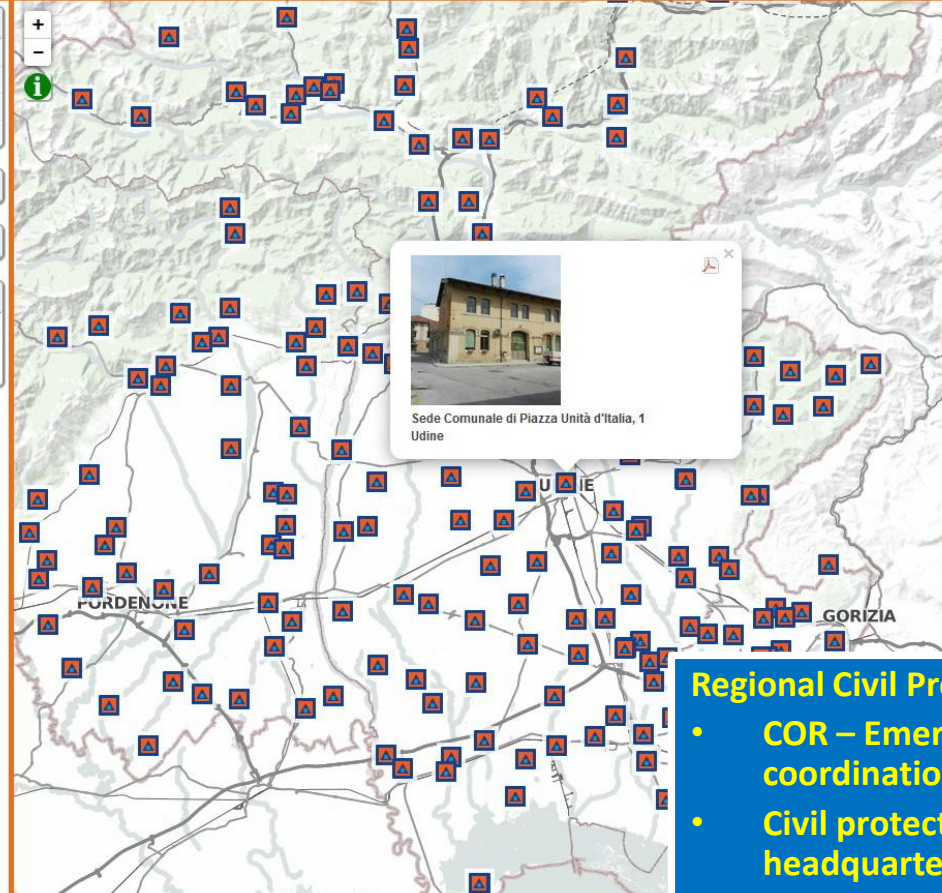
- Centro regionale coordinamento emergenze
- Sedi comunali di protezione civile
- Stazioni forestali
- Ospedali

Forze dello Stato

Infrastrutture strategiche

Piani Comunali di Emergenza

Vai al piano di emergenza di:
Amaro



Sedi comunali di protezione civile

I 217 Gruppi comunali di protezione civile della regione dispongono ciascuno di una propria sede operativa dotata di locali per le attività del personale volontario, collegamenti informatici, videotelefono e sala radio per le comunicazioni di emergenza con la Centrale regionale di Palmanova. Le sedi comunali di protezione civile possono ospitare il Centro operativo comunale (COC) e sono segnalate sul territorio con apposita segnaletica stradale per essere più facilmente raggiungibili da eventuali soccorritori esterni.

Interreg IV
Sistema realizzato nell'ambito del progetto Interreg IV Italia-Austria 2007-2013 n°4904 "Ri.Ma.Comm."
This Project is Co-funded by the European Regional Development Fund

- ### Regional Civil Protection structure
- COR – Emergency Regional Centre coordination
 - Civil protection municipality headquarters
 - Regional Forest corp local headquarters
 - Hospitals

Emergency plans web portal

3 levels Web access :

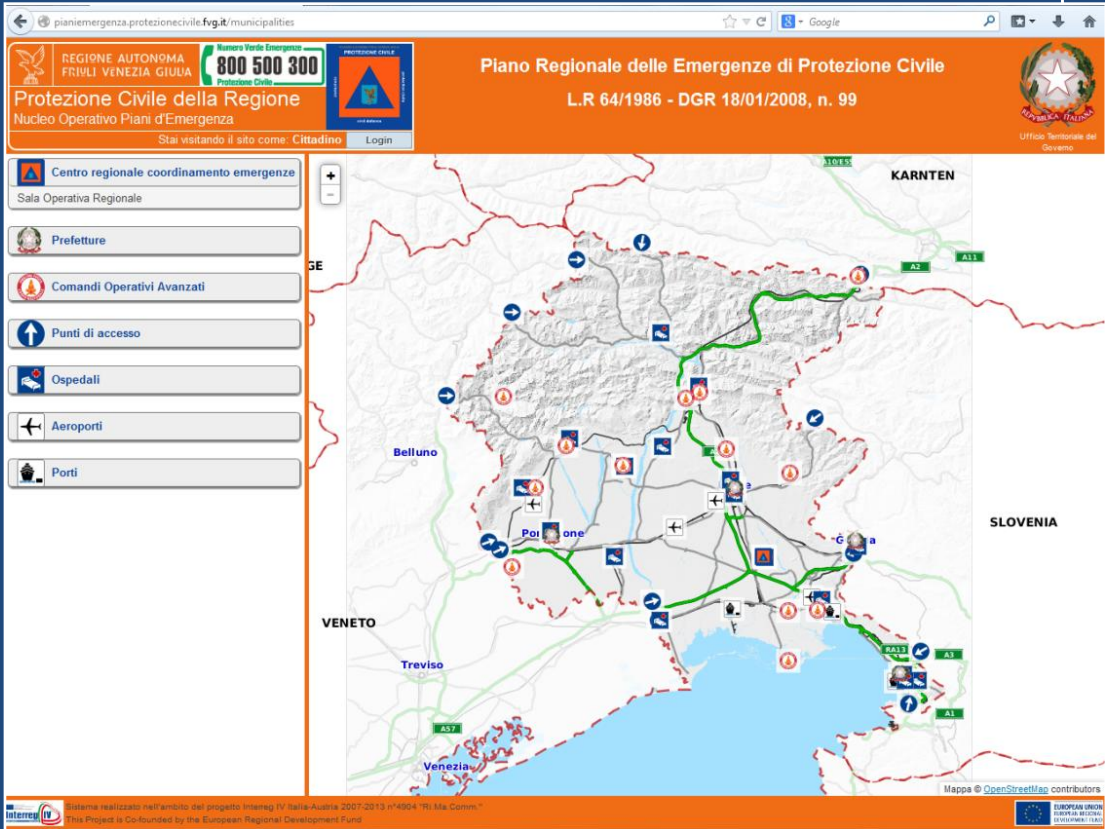
Citizens

Municipalities

Prefectures and Region

3 levels of specific details for every function.

Citizens have at disposal only information of their interest and auto-protection raccomandations.



<http://pianiemergenza.protezionecivile.fvg.it>

Municipal emergency areas web management system

Census Areas of the municipalities

Emergency Areas



A – Waiting Area



B1 - Shelter Area - not covered



B2 - Shelter Area - covered



C – Storage area for Rescuers



D – Area for landing helicopters

Other data censed



PC - Municipal civil protection center



RI - Checkpoint on the territory



ES – Strategic building



ER – Relevant building

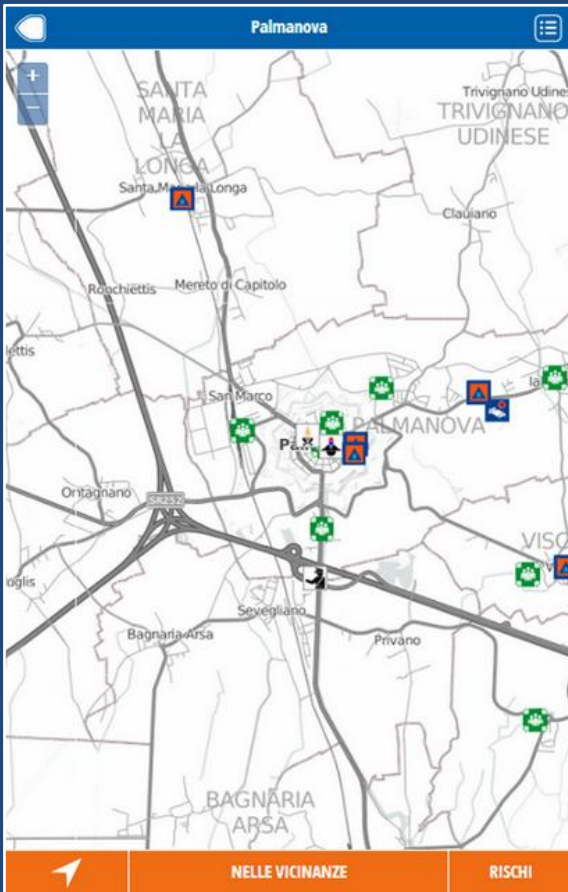


6.041 municipal emergency
areas (2017)

App MoPiC

FVG civil protection municipality emergency plans mobile application

FREE download from Google play or AppStore



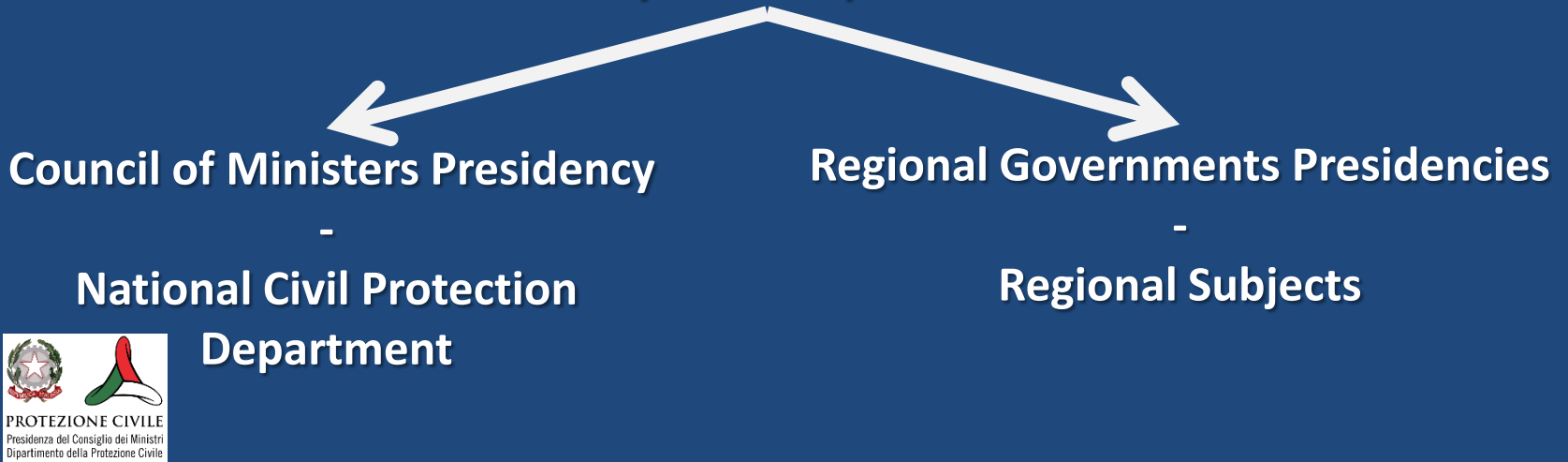
C.F.D.

Friuli Venezia Giulia Decentralized Functional Centre

Direttiva P.C.M. 27/02/2004 e s.m.i.

D.P.C.M. del 27th February 2004

Alert System Responsibilities



National Alert System managed through



Decentralised Functional Centres: Location and competence area (jurisdiction)

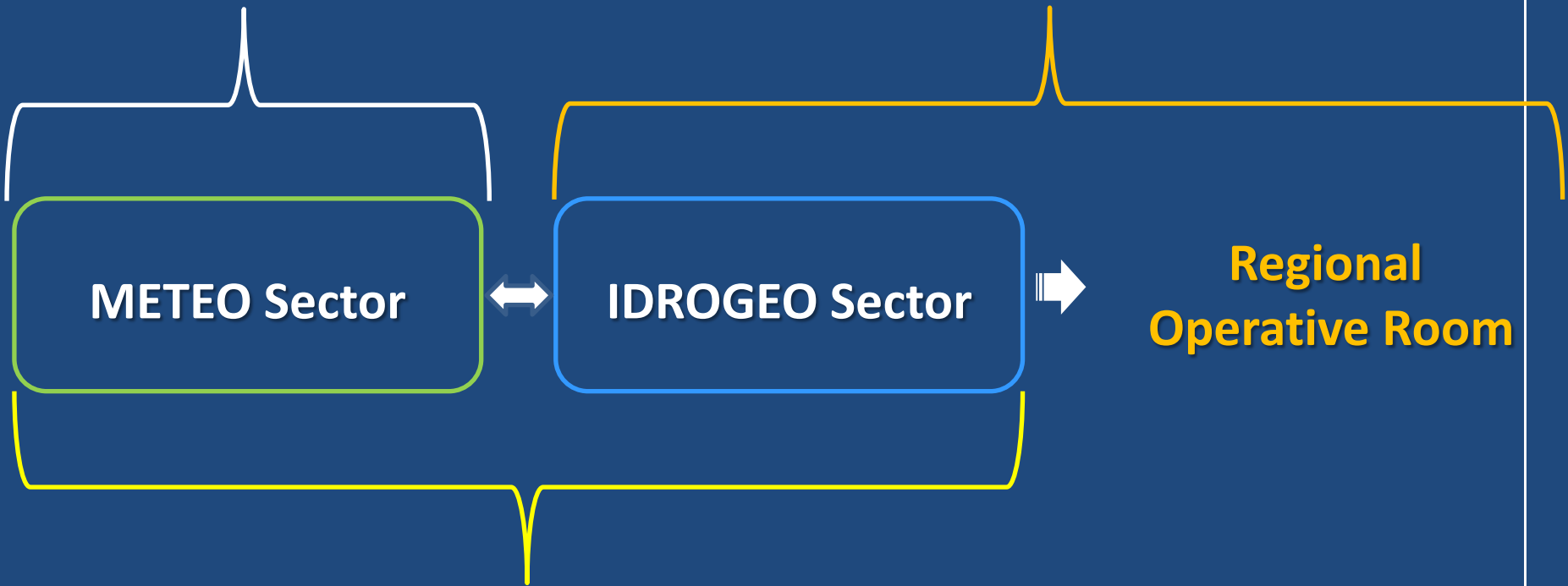


Structures which , based on the information networks and knowledge of critical issues in the area, should provide technical support to the decision of the Civil Protection

- **21 Decentralised Functional Centres**
- **1 National Functional Centre**
- **Competence Centers**

**ARPA FVG
OSMER**

REGIONAL CIVIL PROTECTION



CFD - Decentralised Functional Centre

Everyday

Risks evaluation :

meteorological

hydrogeological

hydraulic

Issue  BULLETINS (dispatch):

METEO
SECTOR



Regional meteorological supervisory Bulletin

IDROGEO
SECTOR



Regional hydrogeological and
hydraulic risk Bulletin

IdroGeo Sector EVALUATION

Valutazione meteo
 DATA E ORA: 03/12/2014 09:28 CET

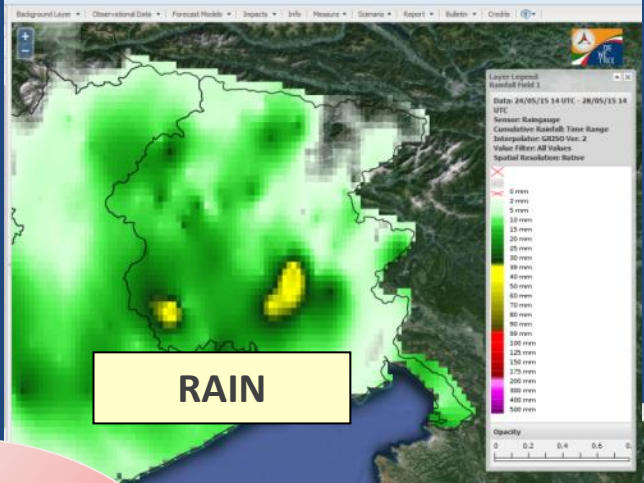
N.B. (dal glossario del Bollettino di Vigilanza Meteorologica Nazionale pubblicato su www.protezionecivile.it): quando i fenomeni sono previsti a carattere di rovescio o temporali, i valori puntuali segnalati corrispondono alla cumulata attesa in un numero significativo di località all'interno dell'area considerata, fermo restando che in un sottoinsieme più limitato di tali punti potranno verificarsi fenomeni più intensi, capaci di dar luogo ad una cumulata maggiore, talvolta anche molto maggiore, di quella indicata. Quantitativa va quindi intesa moltiplicabile per un fattore che può variare da 1 a 5, con probabilità decrescenti. Tale grado di incertezza, sia nelle localizzazioni che nei quantitativi, è tratto nel carattere dei fenomeni a carattere temporaneo.

Legenda rovesci o temporali: = possibilità di rovesci o temporali, = possibilità di temporali forti

Localizzazione spaziale	Quantificazione						D0	D0	D0			
	valori puntuali (mm)									D0	D0	D0
	rovesci o temporali	3 ore	6 ore	12 ore	24 ore	24 ore						
1 - Carnia				40-70	30-50	X	X	X	X			
2 - Tavoliere				30-50	20-40	X	X	X	X			
3 - Prealpi carniche				40-60	X	X	X	X	X			
4 - Prealpi giulie				50-80	40-60	X	X	X	X			
5 - Pianura FN				40-70	30-50	X	X	X	X			
6 - Pianura UD				40-70	30-50	X	X	X	X			
7 - Isontino				40-70	30-50	X	X	X	X			
8 - Laguna				40-70	30-50	X	X	X	X			
9 - Provincia TS				30-50	20-40	X	X	X	X			

Settore Meteo del Centro Funzionale Decentrato di Protezione Civile della Regione FVG - ARPA FVG OSMER
 via Oberdan, 18/a - I - 33040 Vico UD, tel. +39 0432 924141, cell. 349 2476240, email: osm-meteo@arpa.fvg.it

FORECASTING



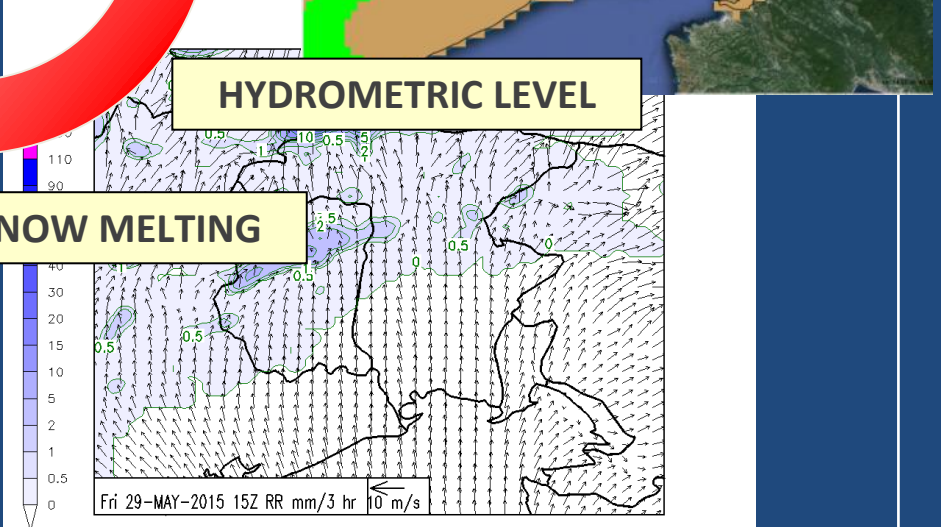
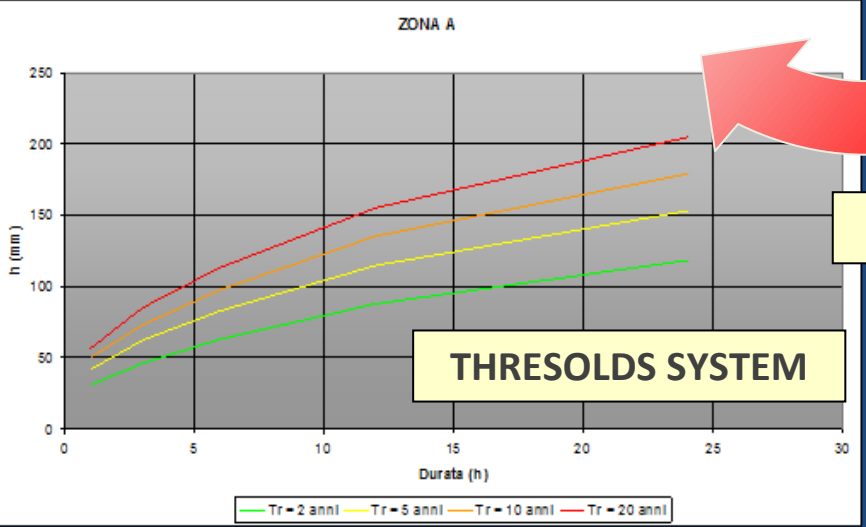
SOIL MOISTURE

ACTIVE LANDSLIDE AND FLOOD

HYDROMETRIC LEVEL

SNOW MELTING

THRESHOLDS SYSTEM



Rainfall thresholds system

For precipitation, according to a national study, the levels of the system of thresholds are based on the **return time**:

Absence criticality

No significant
weather expected

Ordinary criticality

Return period rainfall
forecast > 2 years

Moderate criticality

Return period rainfall
forecast > 5 years

Highly criticality

Return period rainfall
forecast > 10/20 years

Punctual and areal rainfall thresholds for different areas of alert



Meduna river - Prata di Sopra (PN) - 27 Nov 2002



Livenza river – Loc. Traffè (PN) - 28 Nov 2002

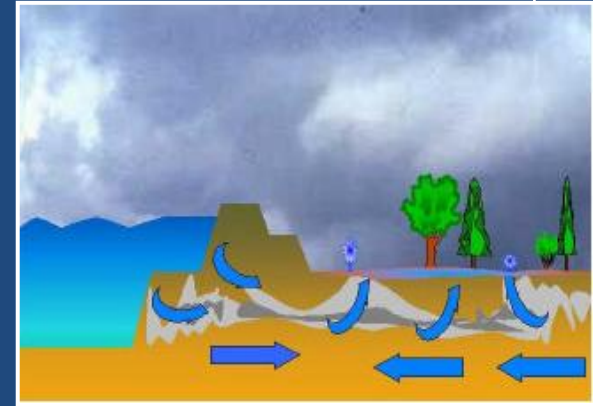
Embankments surveillance phase

Civil protection municipality Groups are in charged of the **surveillance of the embankments** in order to permit a prompt **“hydraulic quick intervention”** in case of damages avoiding ruptures and flooding of inhabited areas

Embankment surveillance phase

Infiltration

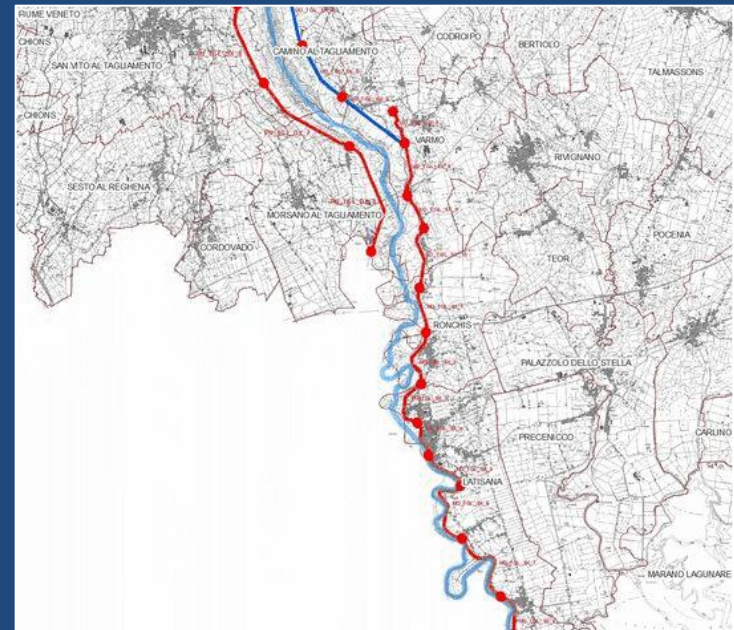
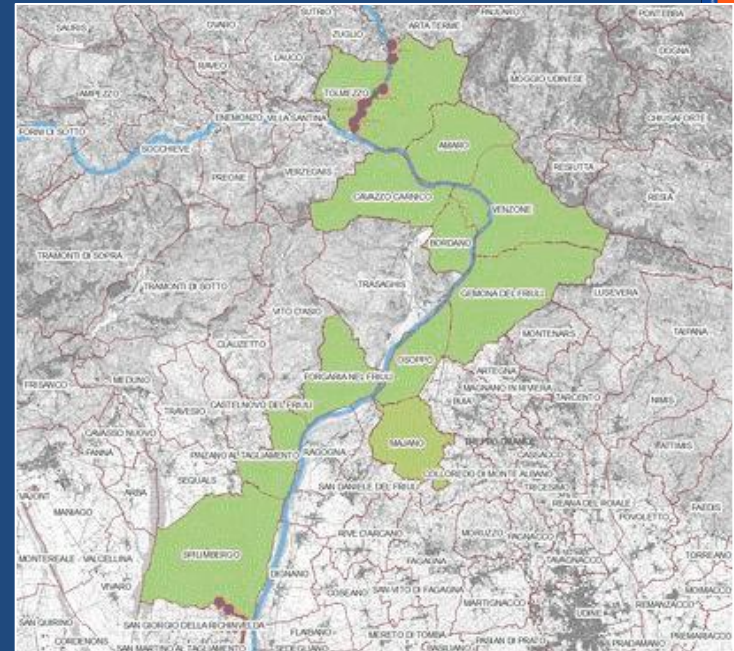
Cracks



High-water service Coordination: Real-time GIS implementation



Immediate perception and visualization of
situation on field

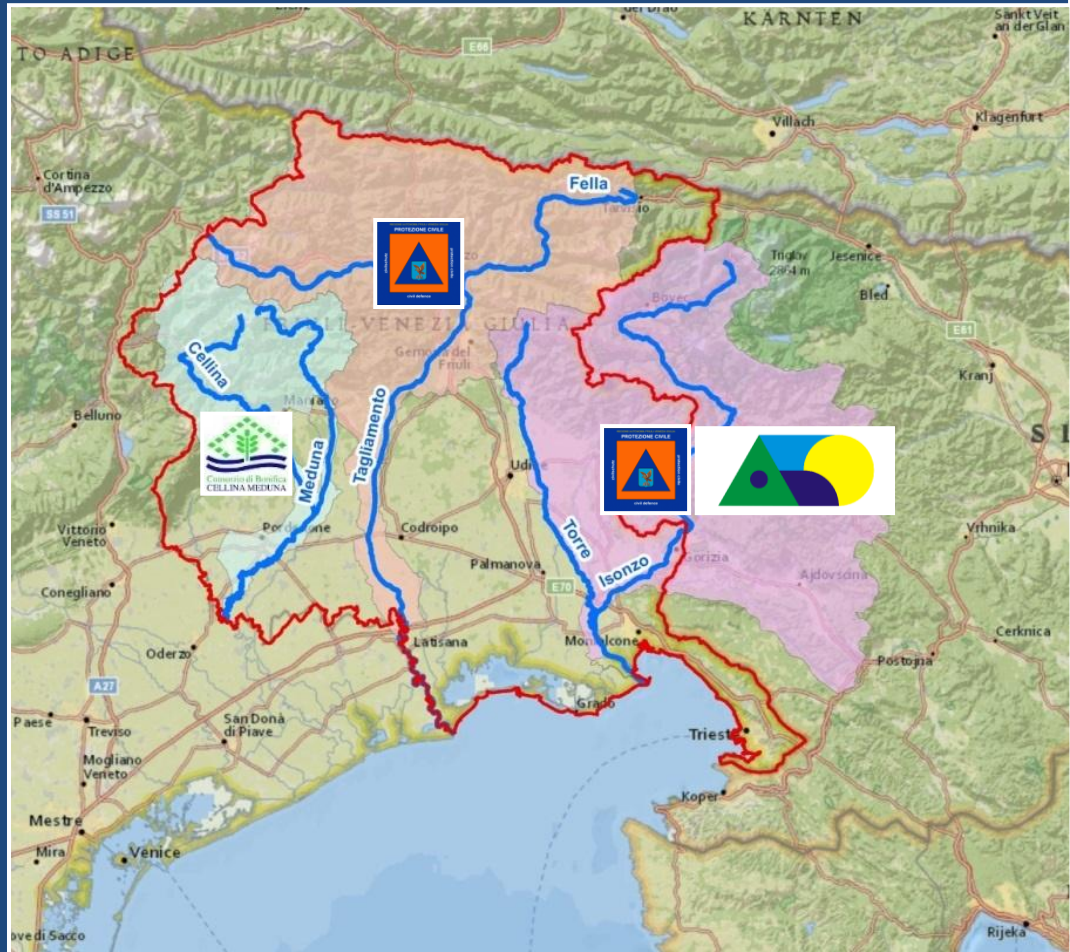


The hydrological forecasting and management system of Friuli Venezia Giulia

The Friuli Venezia Giulia Region has hydrological and hydraulic models for::

- basin of rivers **Cellina-Meduna**
- basin of river **Tagliamento**
- basin of river **Isonzo**

with GIS interface for environmental monitoring and “high water” real-time forecasting.



Prevention, quick intervention and restoration works

Flood 2002

Pordenone embankment's break



Steel screen

Flood 2003 (Pietratagliata)



River side defenses and new bridge



Temporary rock cliff defense



Bailey bridge

PREVENTION, through ...

- Young volunteers training
- Informations to citizens



Meetings and exercises at school with civil protection personnel, volunteers and students



Friuli Venezia Giulia Civil Protection Web Portal



File Edit View History Bookmarks Tools Help

meteo.fvg - Osservatorio ... x Regione Autonoma Friuli V... x Protezione Civile - Friuli Ve... x +


www.protezionecivile.fvg.it/ProtCiv/homepage.aspx?firstlanding=true

Accesso area riservata


Google Ricerca personalizzata


REGIONE AUTONOMA FRIULI VENEZIA GIULIA **Protezione Civile** Regione Autonoma Friuli Venezia Giulia Numero Verde Emergenza **800 500 300** Protezione Civile

La Protezione Civile **Volontariato** **Territorio** **Previsione e allerta**



In evidenza

 **COMITATO PARALIMPICO ITALIANO - GARE INTERNAZIONALI DI SCI ALPINO COPPA DEL MONDO E ALTRE SPECIALITA' PER ATLETI DISABILI**
29/11/2016 >

 **18ª giornata del volontario**
03/12/2016 > tradizionale "Giornata del Volontario" e riconoscenza

Selezione operatori NUE 112
Bollettini giornalieri emessi dal Centro Funzionale Decentrato

Bacheca eventi del volontariato di Protezione civile
Nella bacheca sono visibili gli eventi in programma organizzati dalla Protezione Civile della Regione o dai Gruppi o Associazioni del Friuli Venezia Giulia

Servizi assicurativi
Documentazione riguardante i Servizi assicurativi di Protezione Civile

Sisma Centro-Italia

rete IDROMETEOROLOGICA
Monitoraggio idrometeorologico a scopi di Protezione Civile per mezzo di un'unica rete integrata di telemisura

Webcam

www.protezionecivile.fvg.it/ProtCiv/default.aspx/12079-selezione_operatori_nue_112.htm

www.protezionecivile.fvg.it

Home Chi siamo Cerca su Twitter Hai un account? Accedi

TWEET 395 FOLLOWING 42 FOLLOWER 537 MI PIACE 314 Segui

ProtezioneCivile FVG

@ProtCivReg_FVG
 Profilo ufficiale della Protezione Civile della Regione Autonoma FVG - emergenze 800.500.300 - account non monitorato 24/7 - #SocialProCiv

Friuli Venezia Giulia, Italia
protezionecivile.fvg.it
 Iscritto a luglio 2016

102 foto e video



Tweet Tweet e risposte Contenuti

ProtezioneCivile FVG ha ritwittato
 crs-rts @crs_rts · 14 min
 Terremoto - Ml: 1.1 4 km ESE di Bovec (SLOVENIA) 2016-11-29 17:42:04 (UTC) #terremoto-46.3203-13.6081

ProtezioneCivile FVG ha ritwittato
 Protezione Civile TS @ProtCivTria
 15 min fa #terremoto 4.4 a Capiti (INGV) terremotoapp.it/m/?s=l&e

← TERREMOTO

L'Aquila
 Capitignano (AQ), Italy
 magnitudo: 4.4 ML
 profondità: 14.0 km

Nuovo su Twitter?
 Iscriviti ora per ottenere la tua cronologia personalizzata!
 Iscriviti



Social Network

E-mail o telefono Password Accedi

Non ricordi più come accedere all'account?

Mi piace Invia messaggio Condividi Altro

Protezione Civile della Regione Autonoma FVG

Home
 Informazioni
 Foto
 Video
 Eventi
 Post
 Recensioni
 Persone a cui piace
 Crea una Pagina

Foto Mostra tutto

Organizzazione governativa a Palmanova
 4.9 ★★★★★ Sempre aperto

Cerca post in questa Pagina

Profilo ufficiale della Protezione Civile della Regione Autonoma FVG

Thank you for your attention

